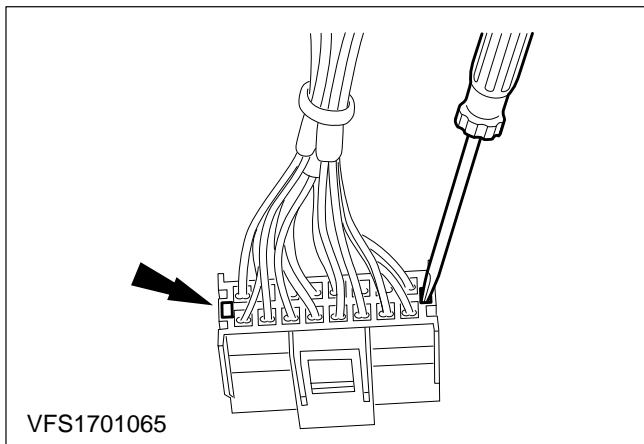


Gear Selector Mechanism – Dismantle and Assemble (selector lever removed) (17 634 8)

Materials

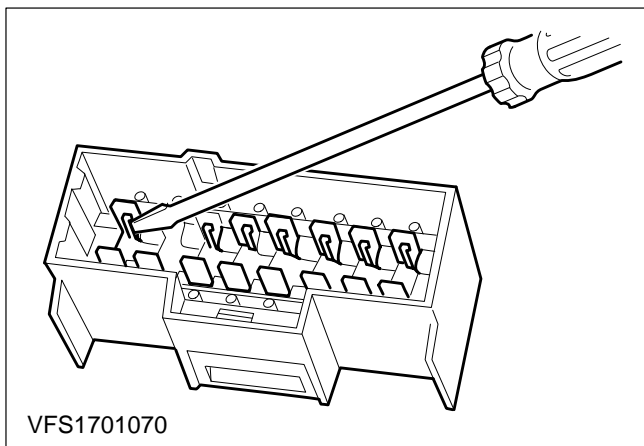
High-temperature grease	ESDM-1C220-A
Cable ties	



Dismantle

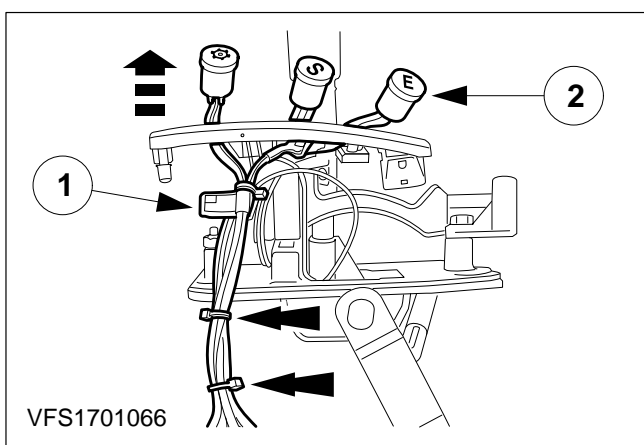
1. Dismantle the multiplug.

Release the red retaining clip from behind and pull it out forwards.



2. Dismantle the multiplug (cont.).

Release each spade connector from the front and pull them out towards the rear.

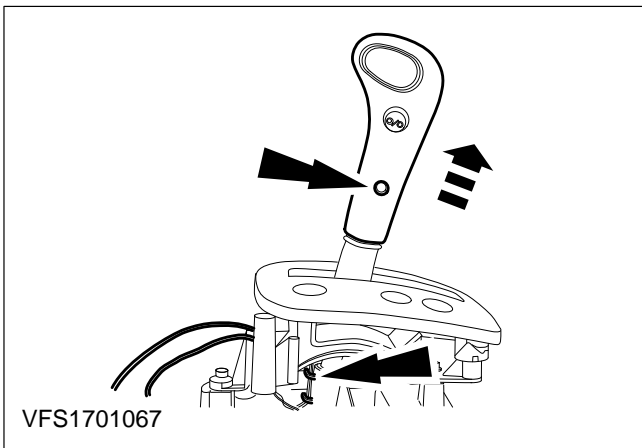


Vehicles with petrol engine only.

3. Remove the switches.

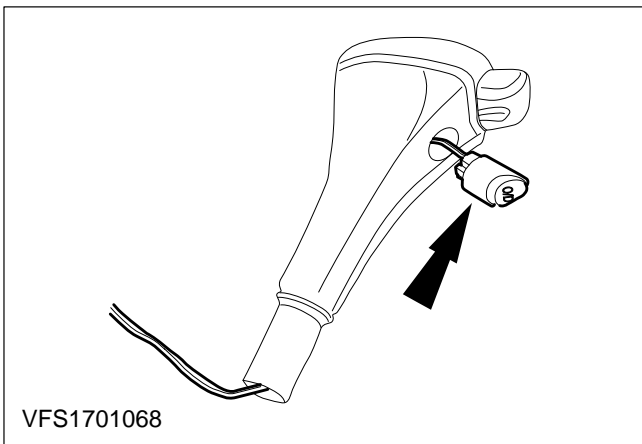
NOTE: The wires for each switch are grouped together. Do not separate the groups.

- 1 Cut the cable ties.
- 2 Remove the plugs.



4. Detach the selector lever knob (one Allen screw).

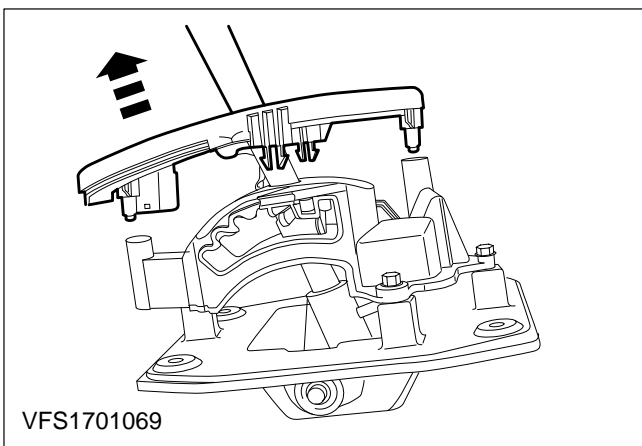
Release both wires for the O/D switch from the guides in the top part of the housing and pull them out.



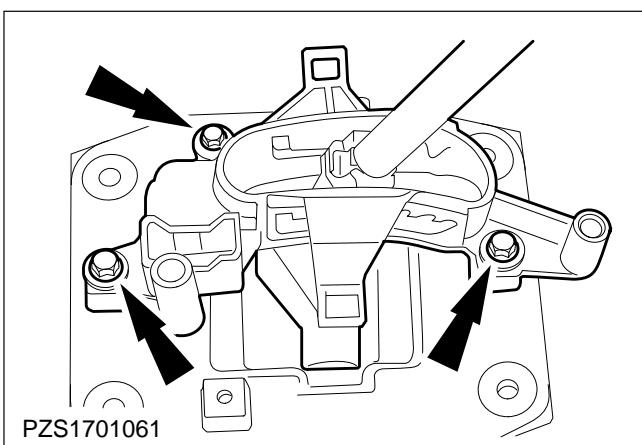
Vehicles with petrol engine only.

5. Remove the O/D switch.

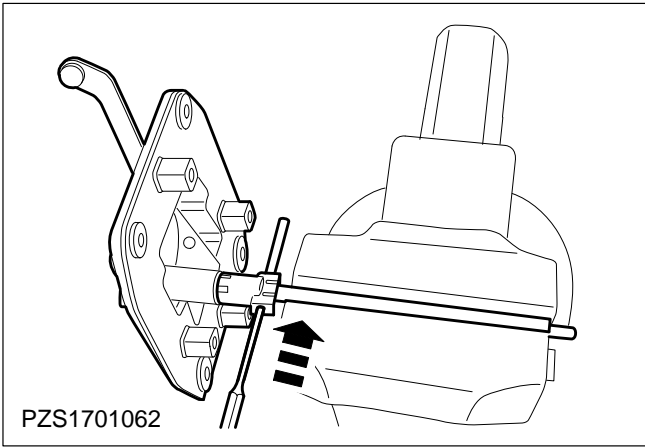
- Carefully prise out the O/D switch.
- Release both wires from the guides in the top part of the housing and pull out the O/D switch.



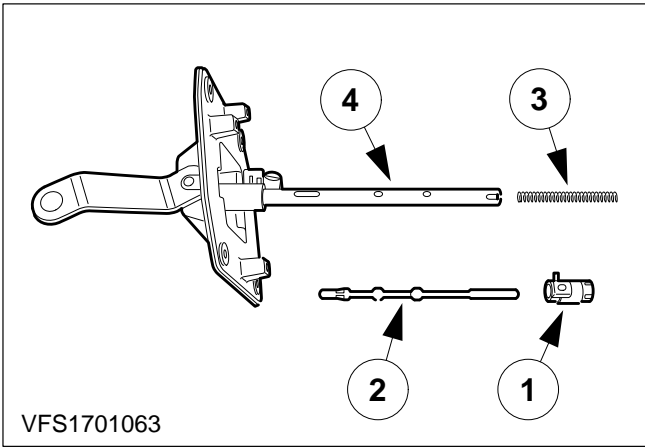
6. Pull off the cover (push fit).



7. Remove the top part of the housing.

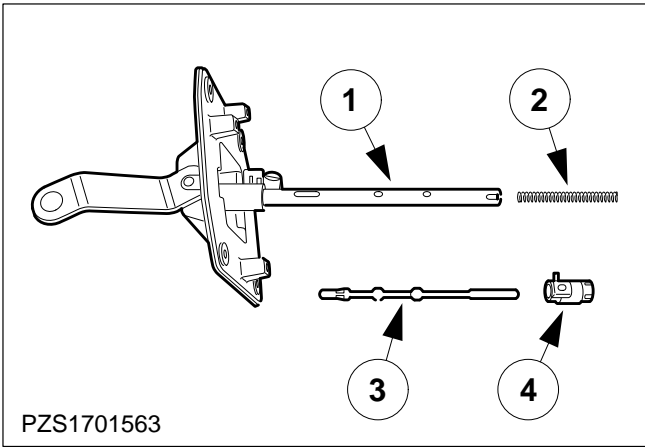


8. Drive out the locking pin.



9. Take the sleeve, plunger and spring off the selector lever.

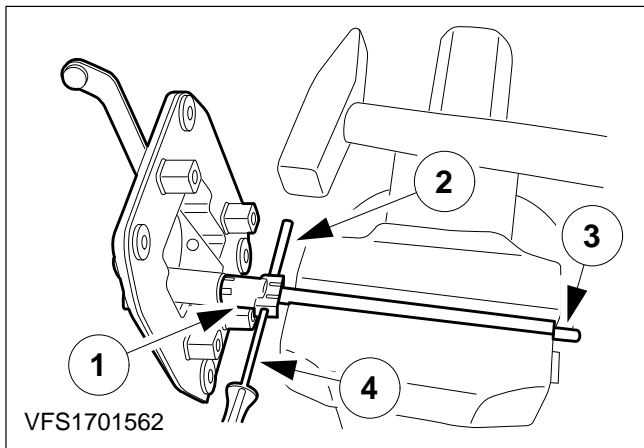
- 1 Sleeve
- 2 Plunger
- 3 Spring
- 4 Selector lever



Assemble

10. Assemble the selector lever.

- 1 Selector lever
- 2 Spring
- 3 Plunger
- 4 Sleeve

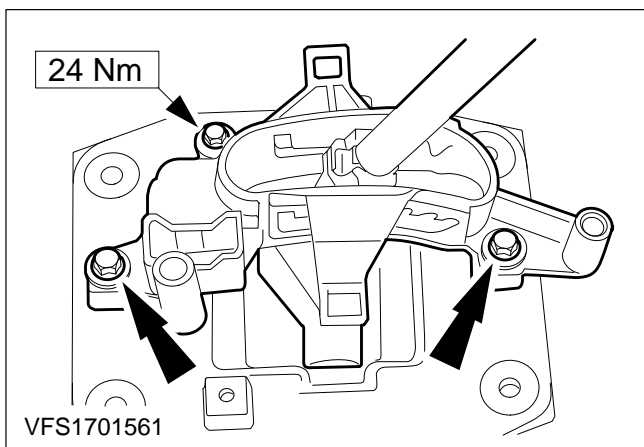


11. Install the locking pin.

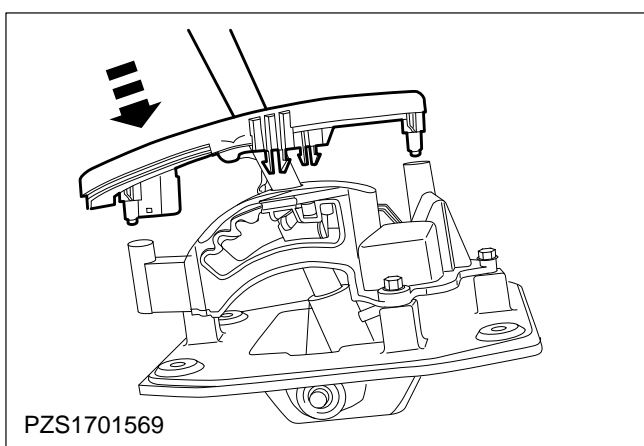
- 1 Bring the sleeve into alignment with the elongated hole on the selector lever.
- 2 Locate the locking pin in position.
- 3 Press back the spring and plunger.
- 4 Hold the spring with a thin screwdriver inserted through the hole in the selector lever.

NOTE: Do not catch the spring when driving in the locking pin.

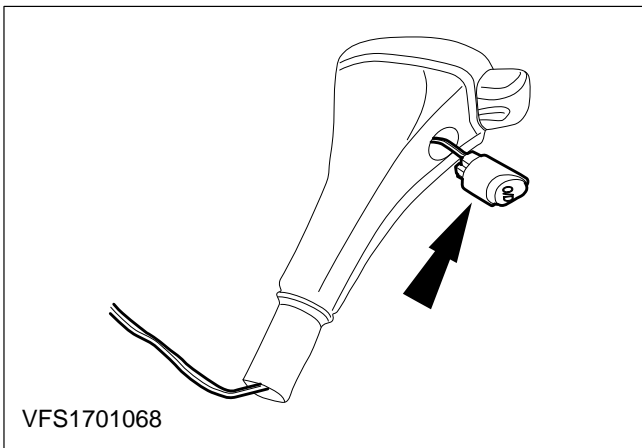
- Carefully drive in the locking pin.



12. Install the top part of the housing.



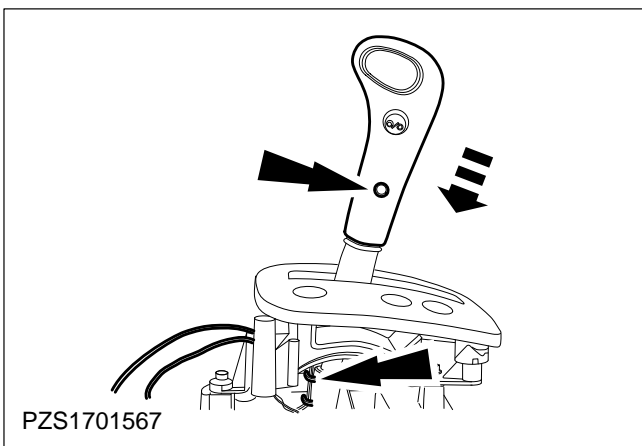
13. Push on the cover.



Vehicles with petrol engine only.

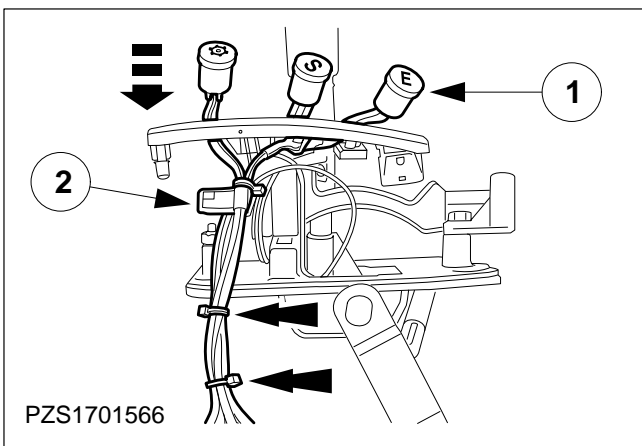
14. Fit the O/D switch in the selector lever knob.

- Guide the wiring through the selector lever knob.



15. Fit the selector lever knob (one Allen screw).

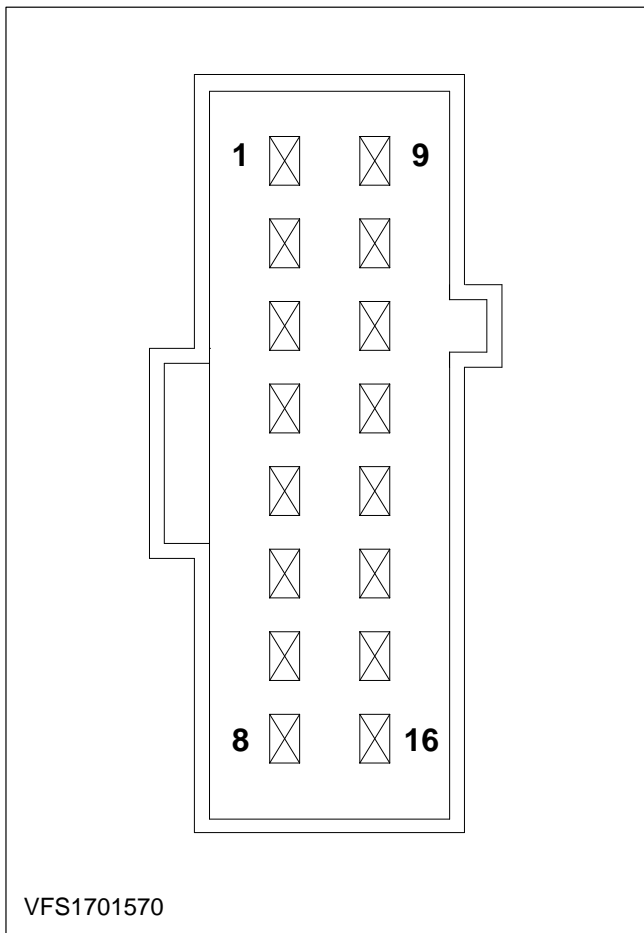
Arrange both wires in the top part of the housing.



Vehicles with petrol engine only.

16. Fit the switches.

- 1 Fit the switches.
- 2 Secure the wiring loom with cable ties.



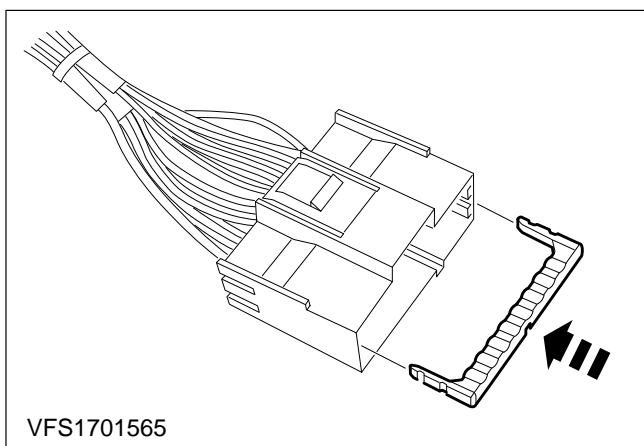
NOTE: Correct positions of spade connectors.

17. Assemble the multiplug (vehicle with petrol engine shown).

NOTE: The spade connectors must click into place.

Fit each spade connector according to the colour markings on the cables.

- Parking lock
 - 1 yellow/orange
 - 9 yellow
- O/D switch
 - 2 green/black
 - 10 green/black
- Winter
 - 8 black
 - 7 orange/black
 - 16 purple
 - 15 green/red
- E (Economy)
 - 6 black
 - 5 black/red
 - 14 purple/orange
 - 13 green/orange
- S (Sport)
 - 4 black
 - 3 green/black
 - 12 purple/black
 - 11 green/black



18. Assemble the multiplug (cont.).

Fit the red retaining clip.